

24

Sergei Prokofieff
Romeo and Juliet
Suite No. 2

(MUS 64)

22

2. Ben Elmi

Tuba

SET 9

No. 1, 5, 8

Suite 2
РОМЕО И ДЖУЛЬЕТТА
ВТОРАЯ СЮИТА

С. ПРОКОФЬЕВ

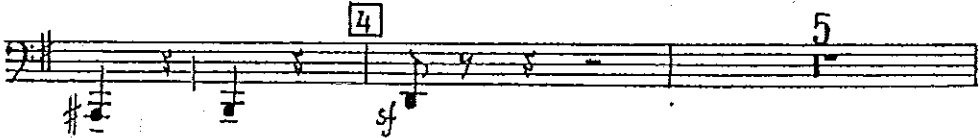
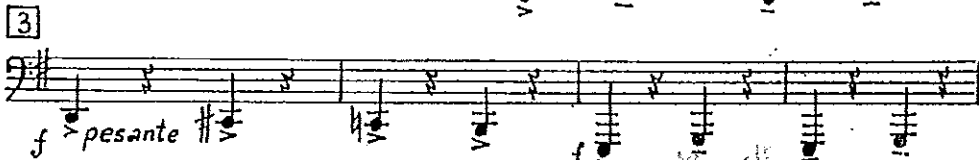
13 JUL 1993

1. МОНТЕКИ И КАПУЛЕТТИ. 1

Andante



[2] Allegro pesante



Tuba

2.

Measures 1-5 of the Tuba part. Measure 1 starts with a dynamic marking of *f*. Measure 5 is boxed with the number 5. Measure 3 has a dynamic marking of *f pesante*. Fingering numbers 1, 3, and 1 are indicated above the notes in measures 2, 4, and 5 respectively.

Measures 6-7 of the Tuba part. Measure 6 is boxed with the number 6. Measure 7 has a dynamic marking of *f*. Measure 8 has a dynamic marking of *f*.

Measures 8-9 of the Tuba part. Measure 8 is boxed with the number 8 and has a tempo marking of *Moderato tranquillo*. Measure 9 is boxed with the number 9 and has a tempo marking of *Allegro pesante*. Measure 10 has a dynamic marking of *p*.

Measures 10-11 of the Tuba part. Measure 10 is boxed with the number 10 and has a dynamic marking of *mf*. Measure 11 has a dynamic marking of *f*.

Measures 12-15 of the Tuba part. Measure 15 has a dynamic marking of *f*.

2. Джульетта девочка.
ТАСЕТ

3. ПАТЕР ЛОРЕНЦО.

Measures 16-21 of the Tuba part. Measure 16 is boxed with the number 16 and has a tempo marking of *Andante espressivo*. Measure 17 has a dynamic marking of *p dolce*. Measure 21 is boxed with the number 21.

✓ 2. Сцена

Tacet

✓ 3. Мадригал

Tacet

✓ 4. Менуэт

Tuba

36 Assai moderato

3

37 2 4

38 2 *f* *f* *Pun poco gravemente*

poco rit. **39** a tempo 9 *appena rit.* **40** a tempo 9

41 *f* **42** *f* *pp*

43 3 *mp* *mp* *pp* *pp*

44 *f* **45** 8 **46** 10 *f*

5. Маски

Tacet

Tuba *Andante* X. 6. Ромео и Джульетта

51 *Larghetto* 9 un poco rit. a tempo 52 11 pochiss. rit.

53 *Inquieto* *mp* *poco espress.* 5 1 1 2 2 1 2 2 2 3 2 poco calando *poco*

54 *Andante* 11 55 2 6 56 *f molto espress.*

57 13 58 1 *mf* *dim. mp* *pp* ritard.

59 2

60 *Piu mosso* *mf* *f* *f* *mf* 61 8

62 2 rit. a tempo 3 *p* *poco cresc.* ritard. 2 *mp* *Meno* 5 *mosso*

p *un poco espress.* *p*

7. Гибель Тибальда

F. et 3

63 *Precipitato* 4 64

65 4

66 *f* 4

mf

30848

Tuba

67 1

68 10 3 69 3

f *f* *mp* *cresc.* *p* *ff* *ff*

Presto

70 8 71 12 72 8 73 8

sf *ff* *ff* *mf* *f* *f*

74 1 8 75

76

77 8 78 6 79 15 *mp* *poco rit.* 80 Adagio drammatico

81 *ff*

ff *smile*

poco rit. 82 a tempo

Poco meno mosso

ff

Tuba

4.

mf

rit. 2 [48] [49] Andante 3

pp

rit. assai

pp

p. 4. espr. mf

6. Танец Антильских девушек
ТАСЕТ

7. Ромео у могилы Джульетты.

[57] Adagio funebre 14 [58] 8 [59] 4 Cor. 6 Cornetto, Tr. no I 2

[60] Tuba (Timp) u/b r. 3)

Tuba

61 8 *brs*

62 *mf*

63 *f*

64 *mp*

65 *dim.*

65 *mf*

66 *f pesante*

67 *mf sola*

67 *Adagio*

БИБЛИОТЕКА
МУЗФОНДА СССР
Инв. №

114